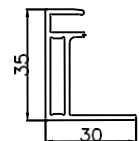
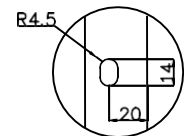
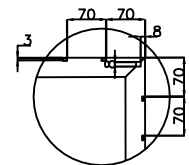
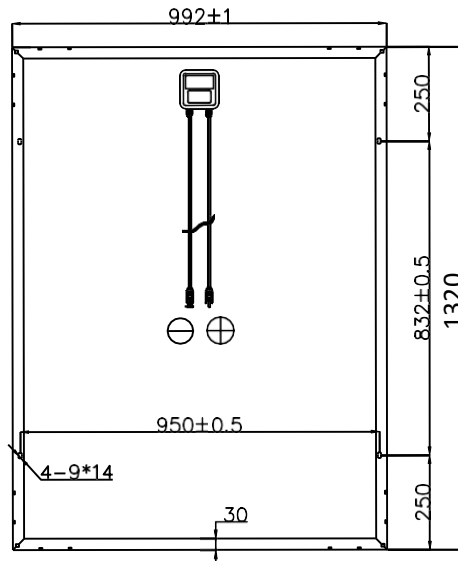
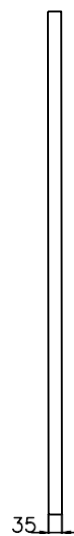
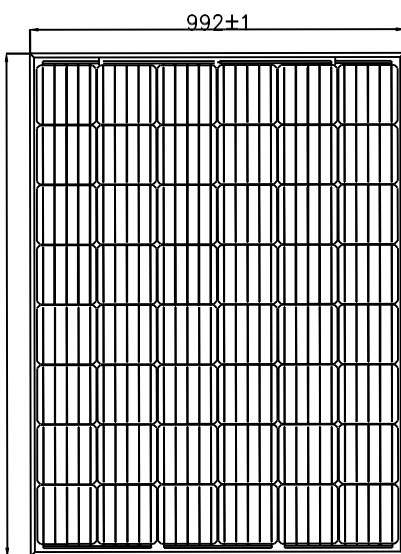


48AUX-250

Specifications

Size of module	1320x992x35mm
Cell Type	MONO CELL 156.75x156.75mm
Number of cells	48(6x8)
Maximum Power(Wp)	250W
Tolerance of Power(%)	0~3%
Open circuit Voltage(Voc)	32.65V
Short circuit Current(Isc)	9.9A
Maximum Power Voltage(Vm)	26.6V
Maximum Power Current(Im)	9.4A
Maximum Series Fuse	15A
Number of Diode	3
Cable type and Length	4mm ² ,90cm
Standard Test Conditions	1000W/M ² ,25°C,AM1.5
Maximum System Voltage	1000V/DC
Temperature-Coefficient Isc	+0.08558%/°C
Temperature-Coefficient Uoc	-0.29506%/°C
Temperature-Coefficient Pmpp	-0.38001%/°C
Normal Operating Cell Temperature	45°C
Module efficiency	18.9%



Auxano SOLAR Nig. LTD. All rights reserved. Specifications included in this datasheet are subject to change without notice.

auxanosolar.com

info@auxanosolar.com

...innovation that works